

Retention index map BPX-03

Equivalent chain lengths (ECL) of FAME on BPX-70 column.

Samples are basically from food products and marine organisms.

Peaks are shown with width at half height of 0.025 ECL units.

Experimental conditions:

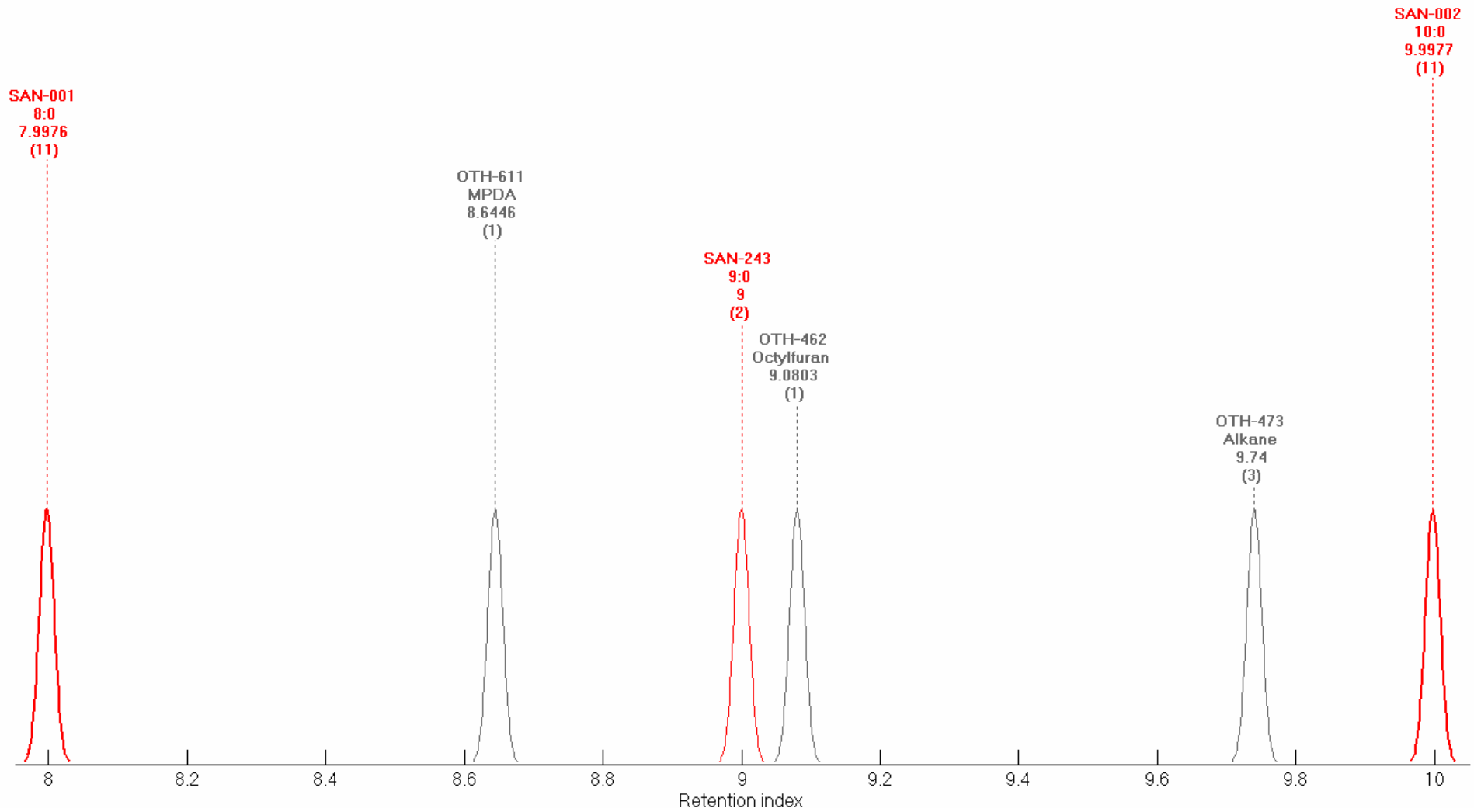
Column: BPX-70, $L = 60$ m, $i.d. = 0.25$ mm, $d_f = 0.25$ μ m (SGE).

Temperature program: Injection at 60°C, isothermal for 4 min, 30°C/min to 160°C, 2°C/min to 260°C.

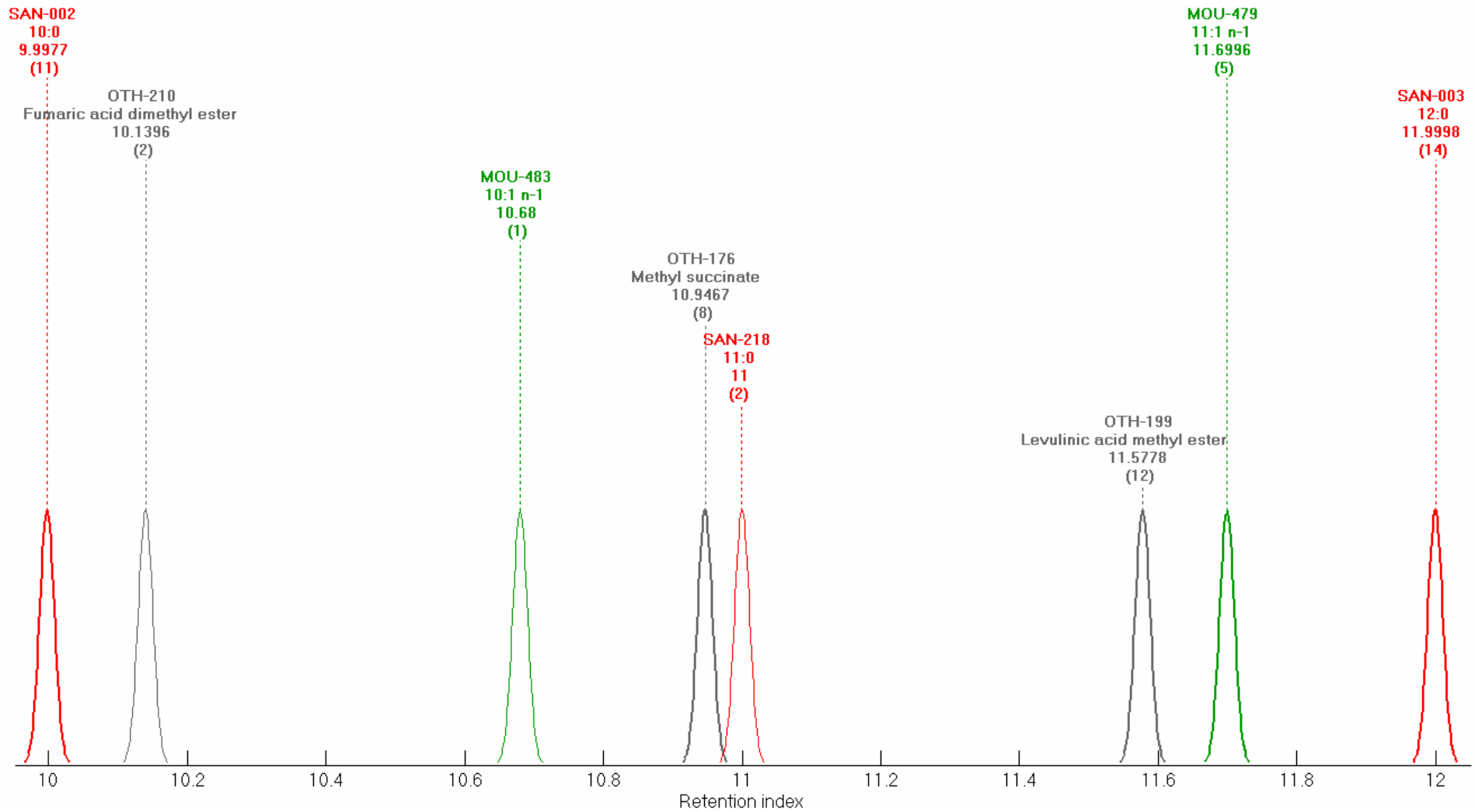
Carrier gas: Helium at 26 cm/s.

Data are acquired at Nofima, Bergen, Norway.

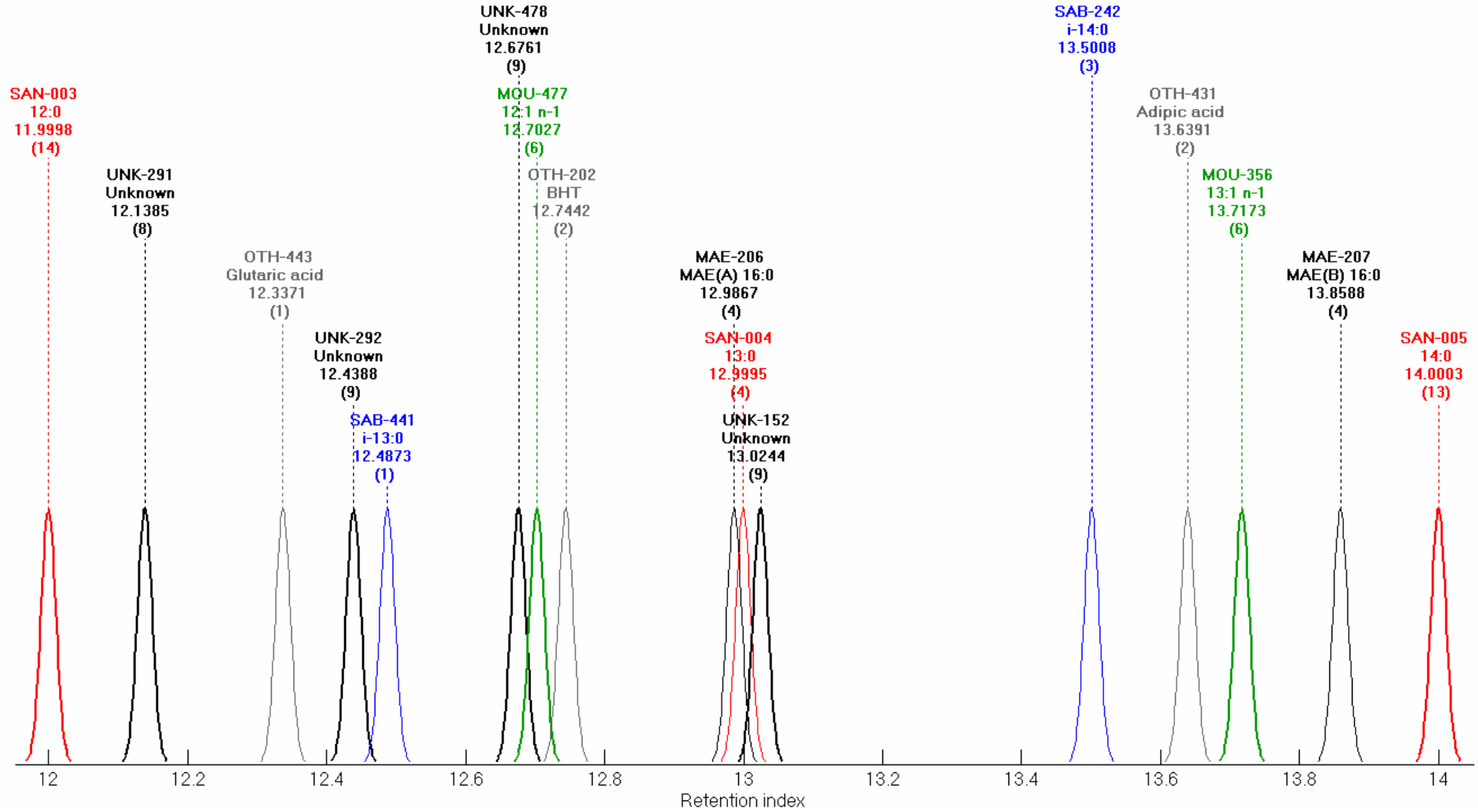
Equivalent chain lengths (ECL) 8-10



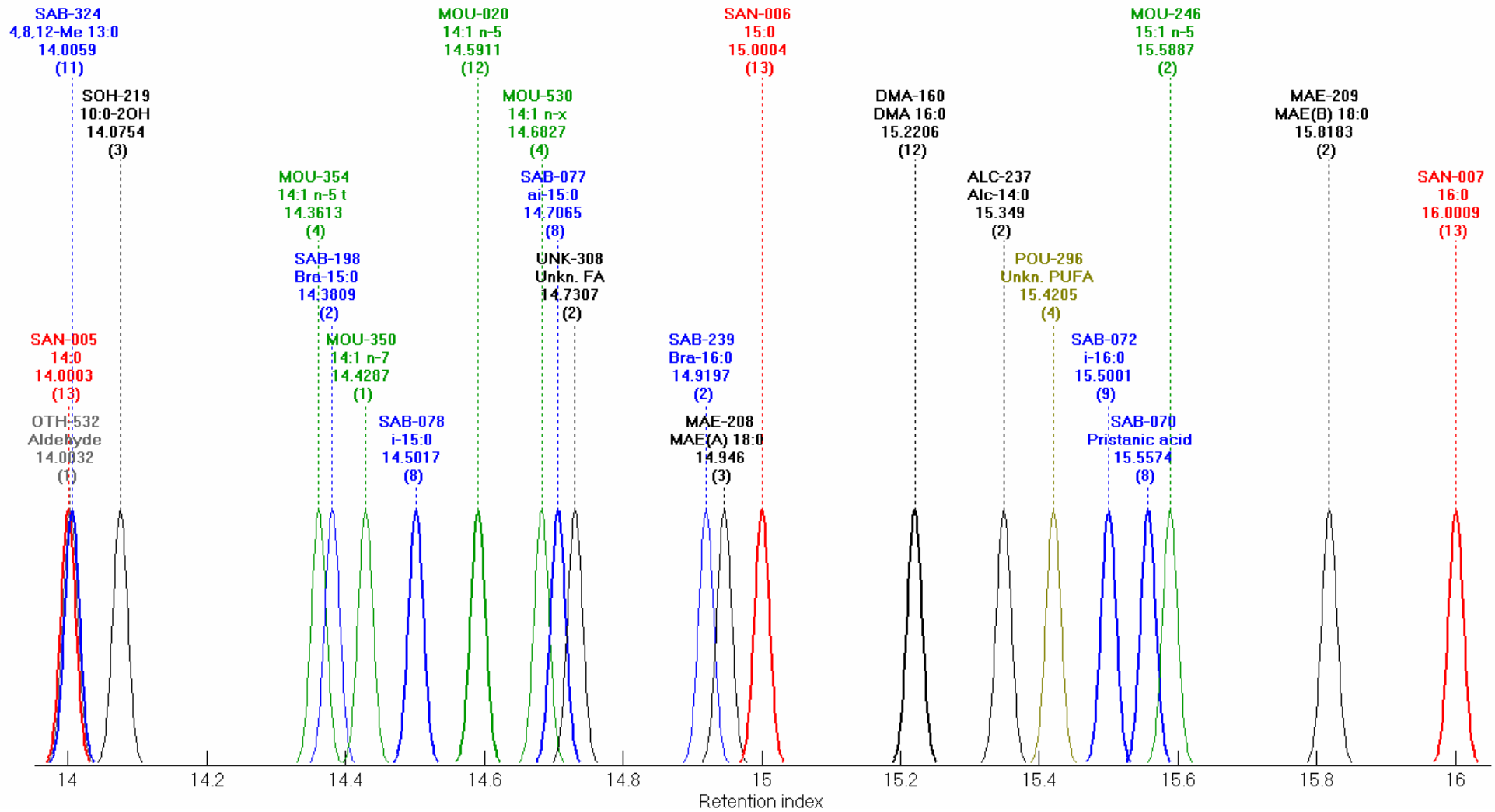
Equivalent chain lengths (ECL) 10-12



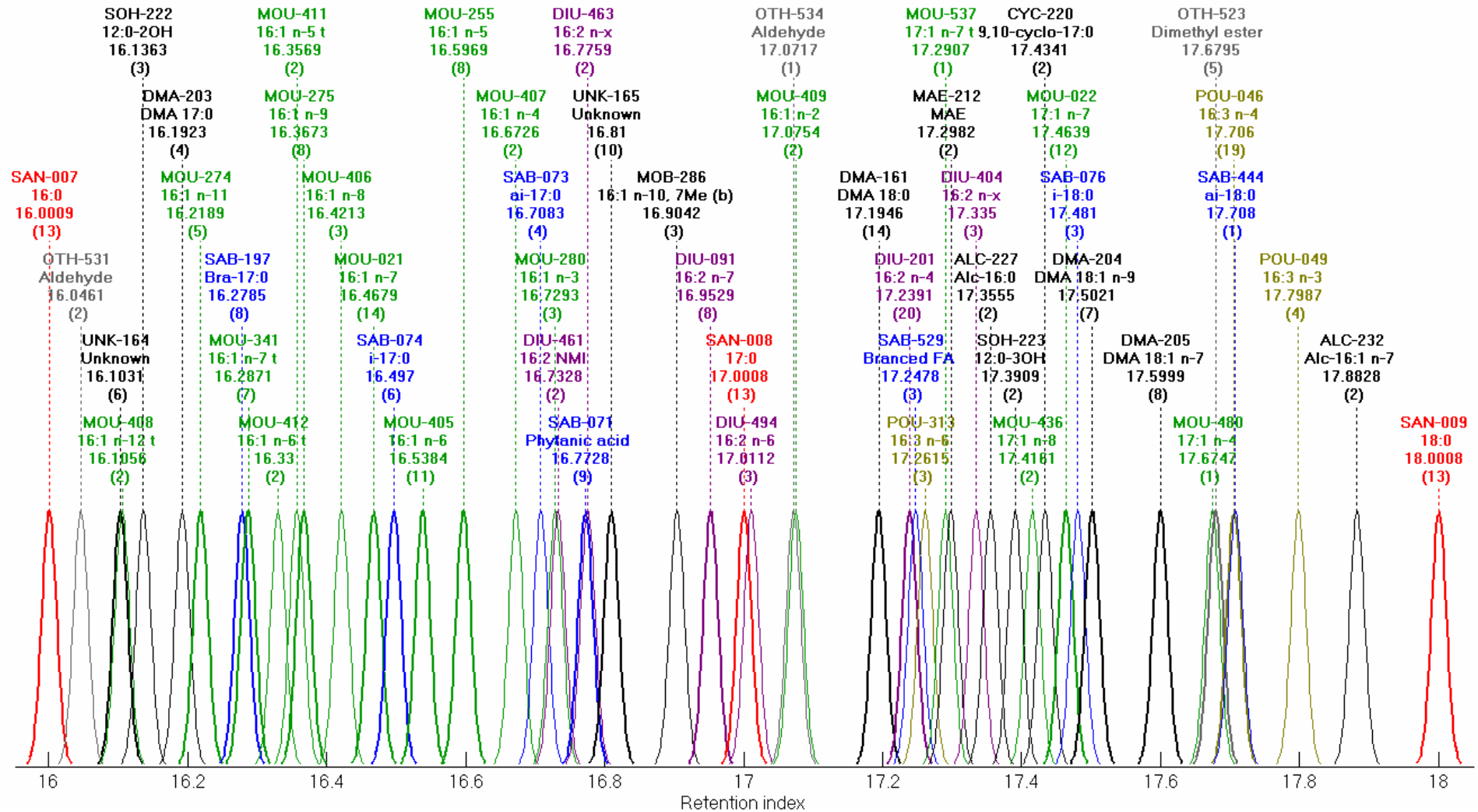
Equivalent chain lengths (ECL) 12-14



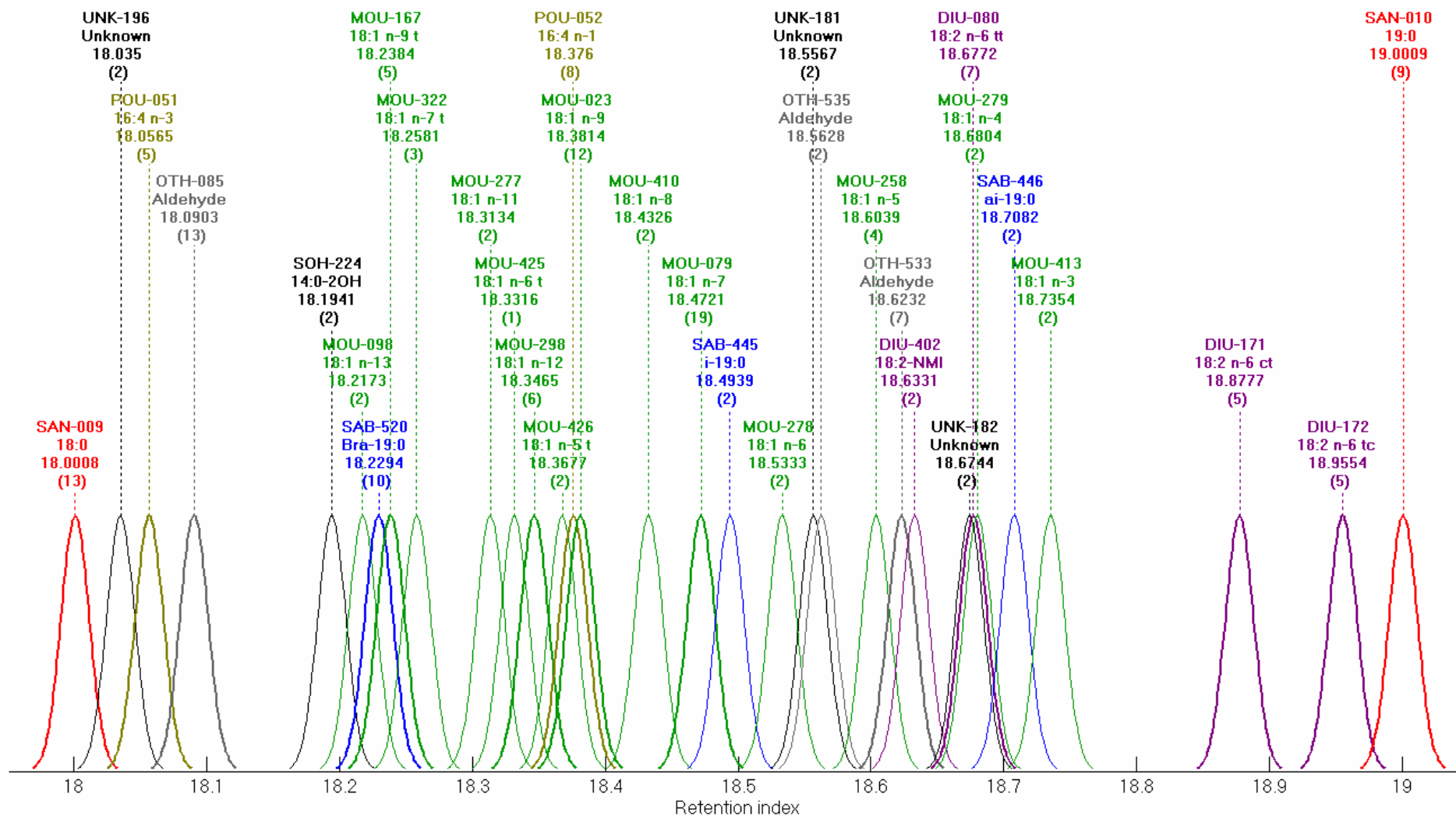
Equivalent chain lengths (ECL) 14-16



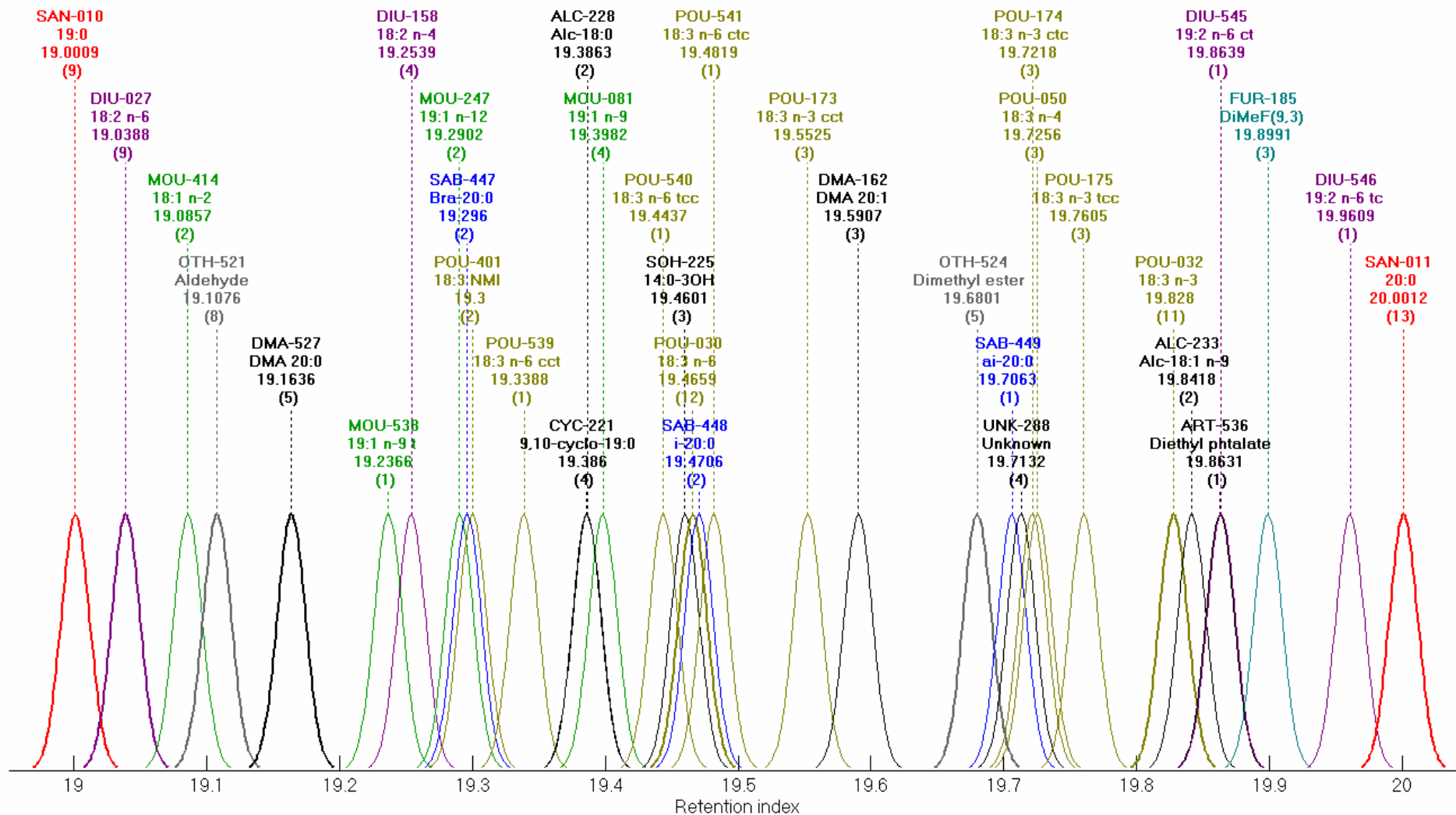
Equivalent chain lengths (ECL) 16-18



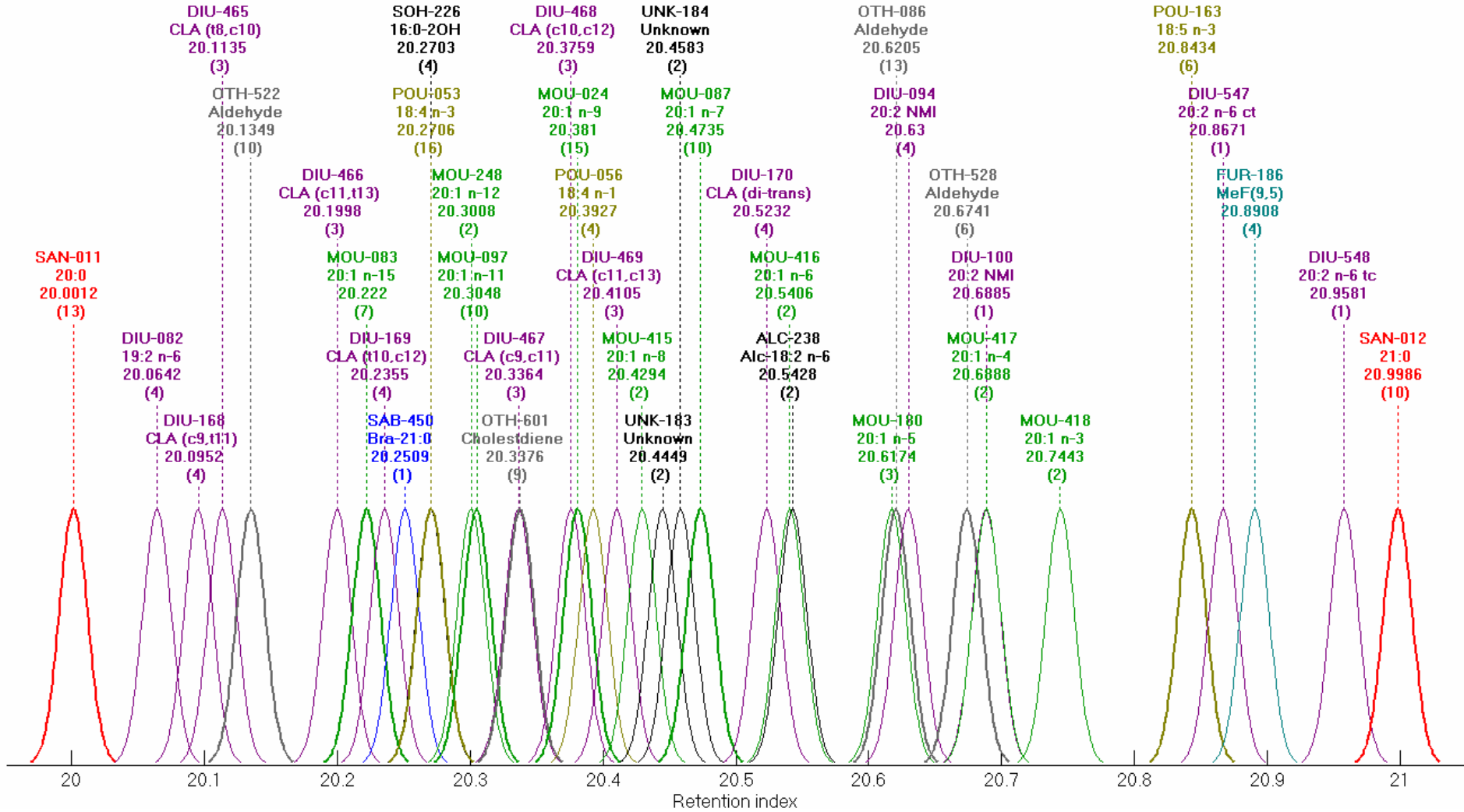
Equivalent chain lengths (ECL) 18-19



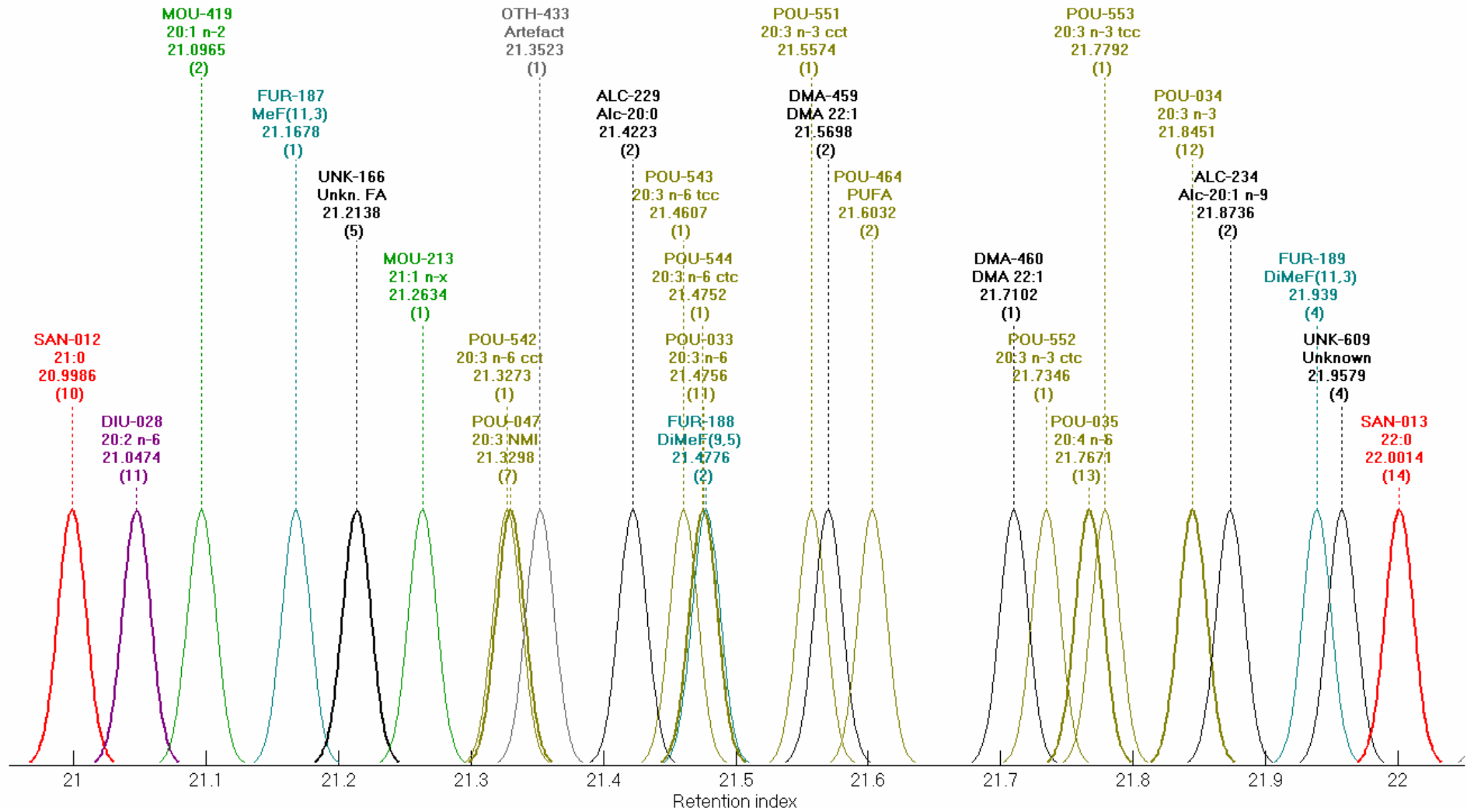
Equivalent chain lengths (ECL) 19-20



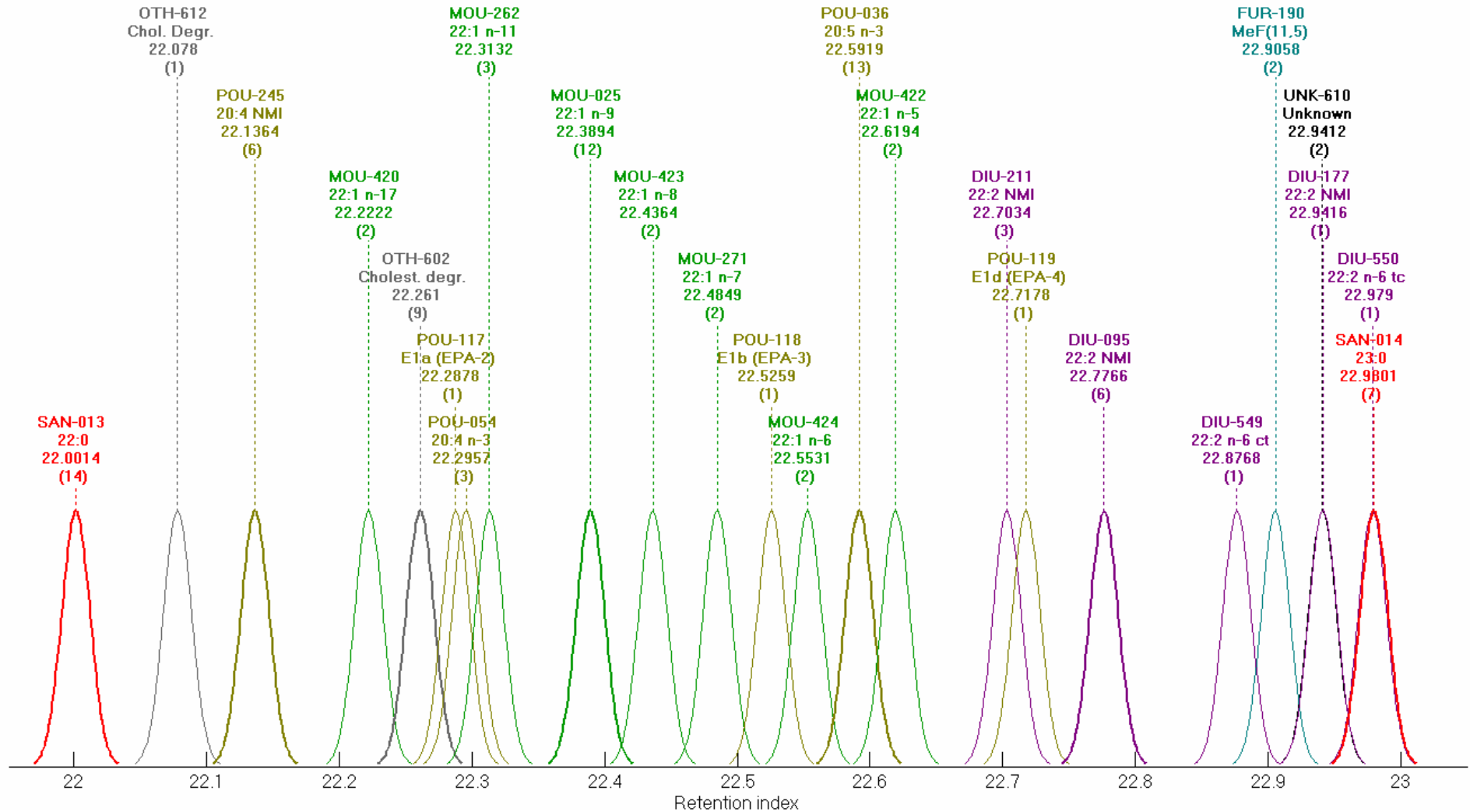
Equivalent chain lengths (ECL) 20-21



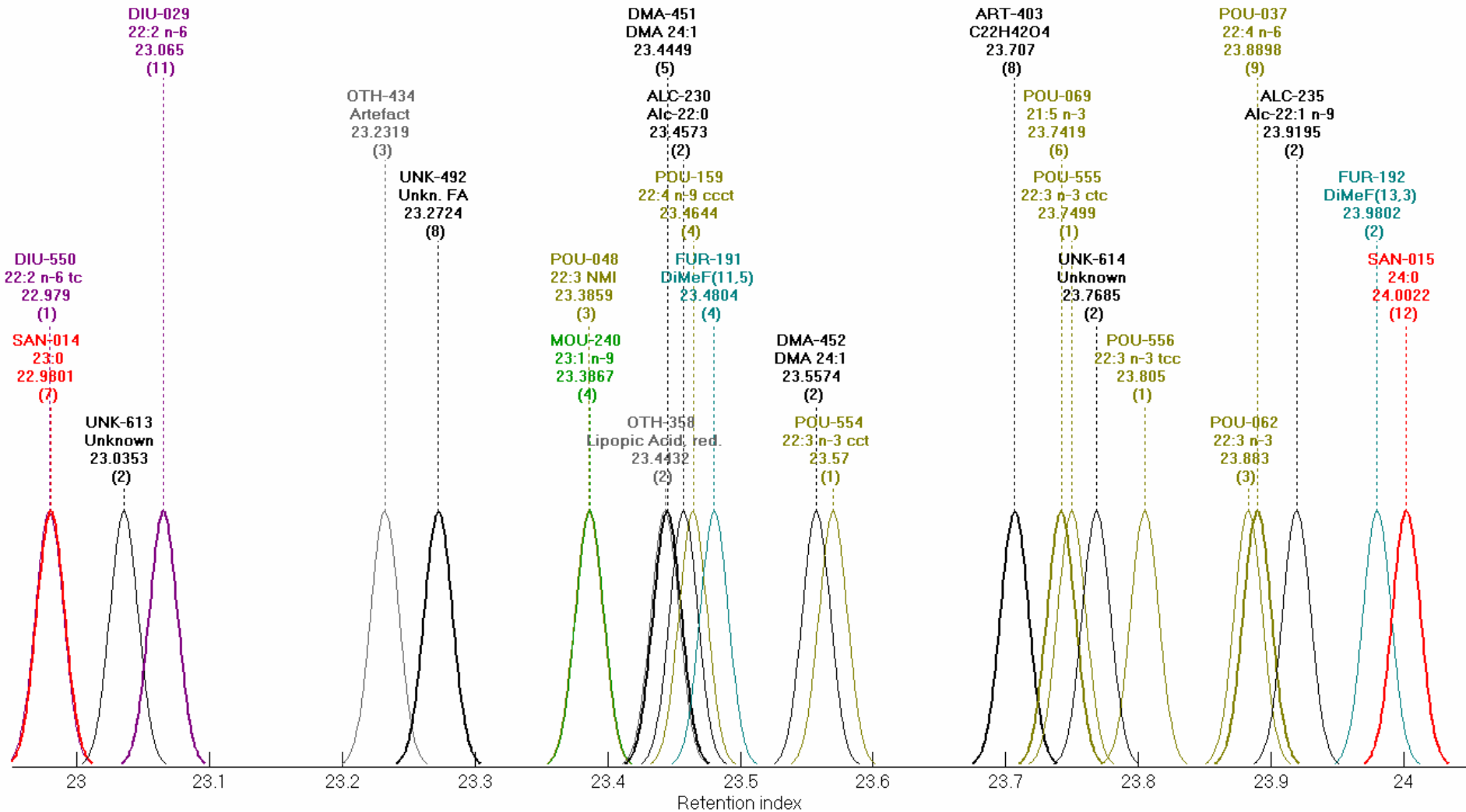
Equivalent chain lengths (ECL) 21-22



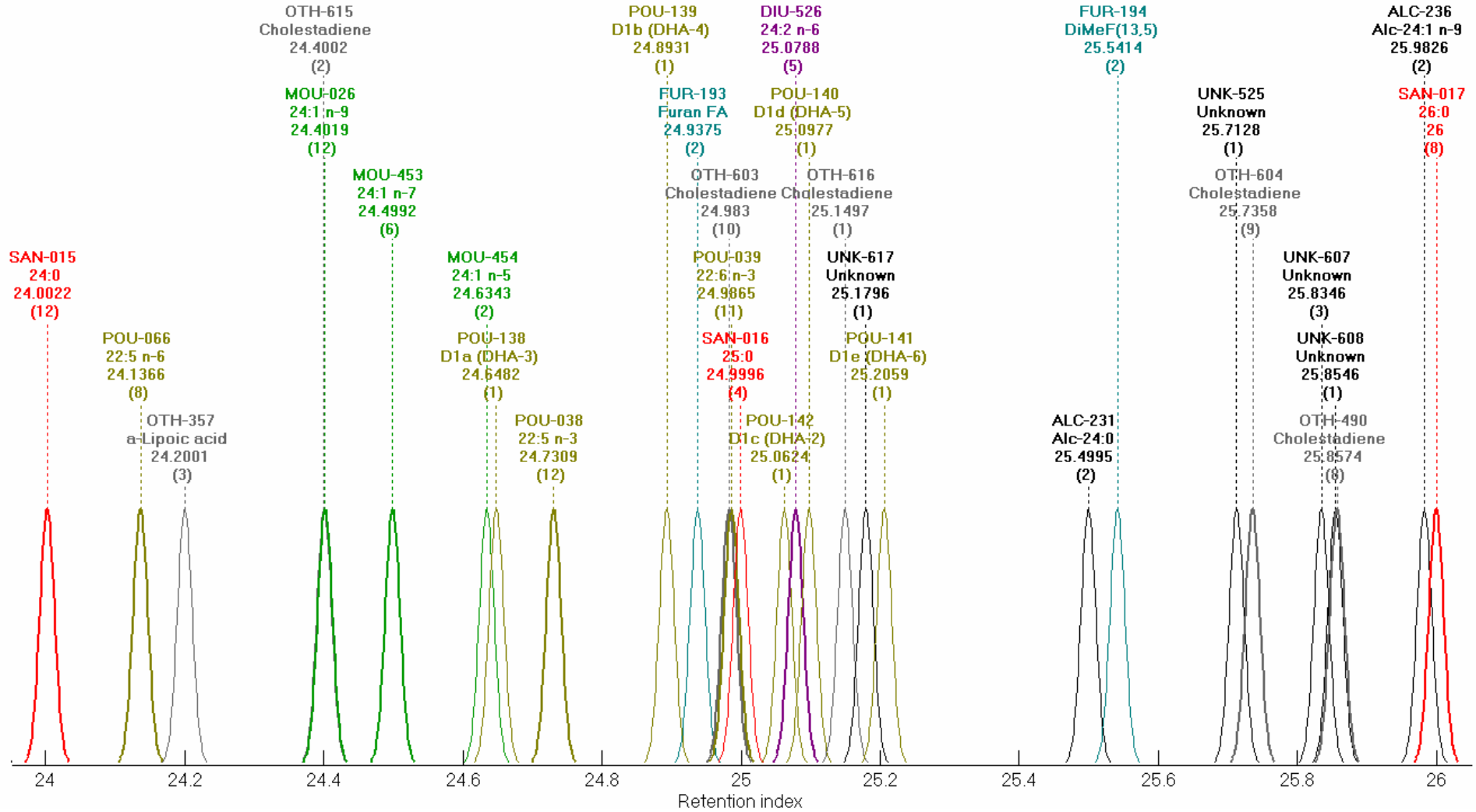
Equivalent chain lengths (ECL) 22-23



Equivalent chain lengths (ECL) 23-24



Equivalent chain lengths (ECL) 24-26



Equivalent chain lengths (ECL) 26-28

