

## Retention index map HI-2009

Equivalent chain lengths (ECL) of FAME on CP-Wax 52cb.

Samples are basically marine organisms.

Peaks are shown with width at half height of 0.025 ECL units.

### Experimental conditions:

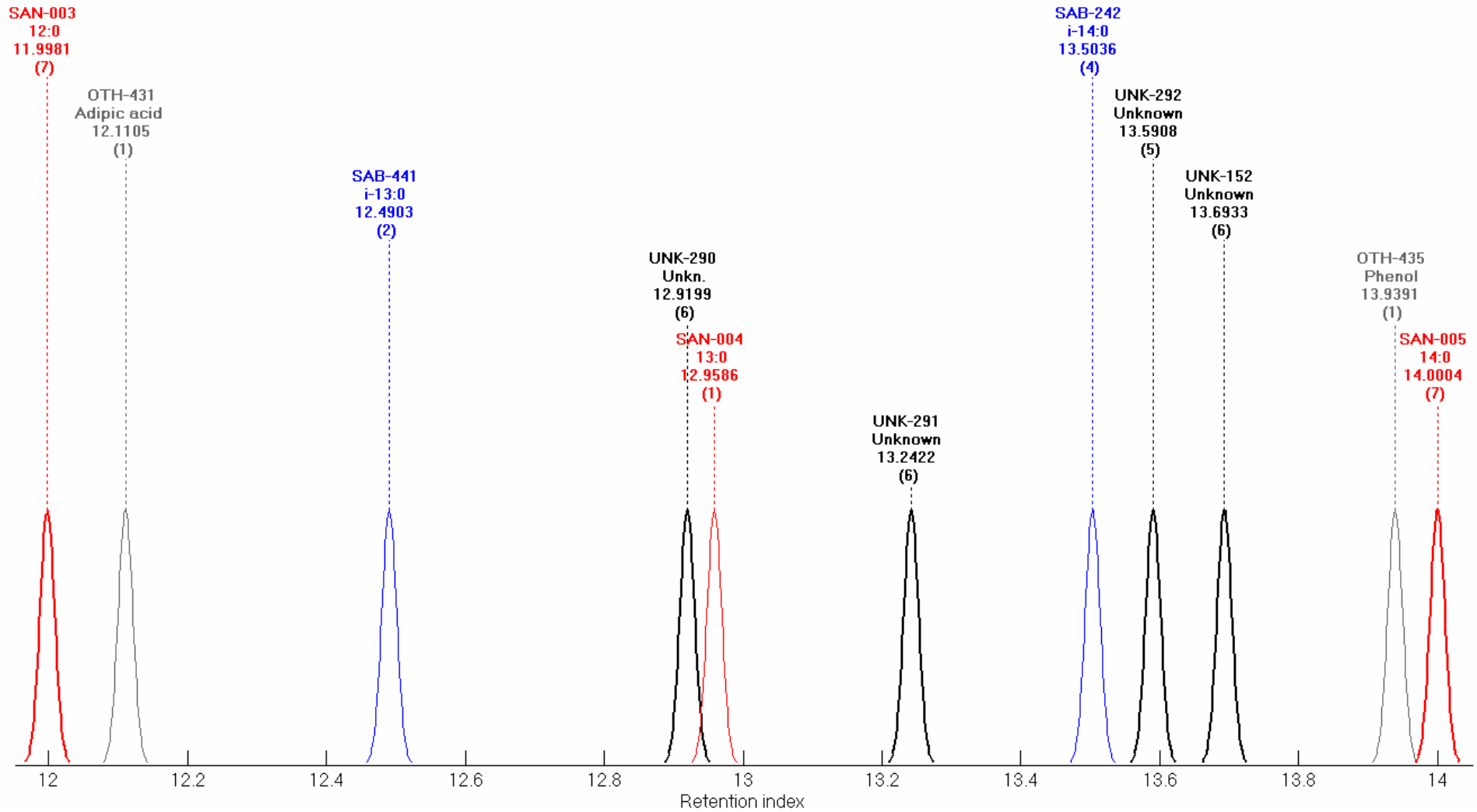
Column: CP-Wax 52cb,  $L = 25$  m,  $i.d. = 0.25$  mm,  $d_f = 0.25$   $\mu\text{m}$  (Agilent).

Temperature program: Injection at 90°C, isothermal for 2 min, 15°C/min to 150°C, 2.5°C/min to 240°C.

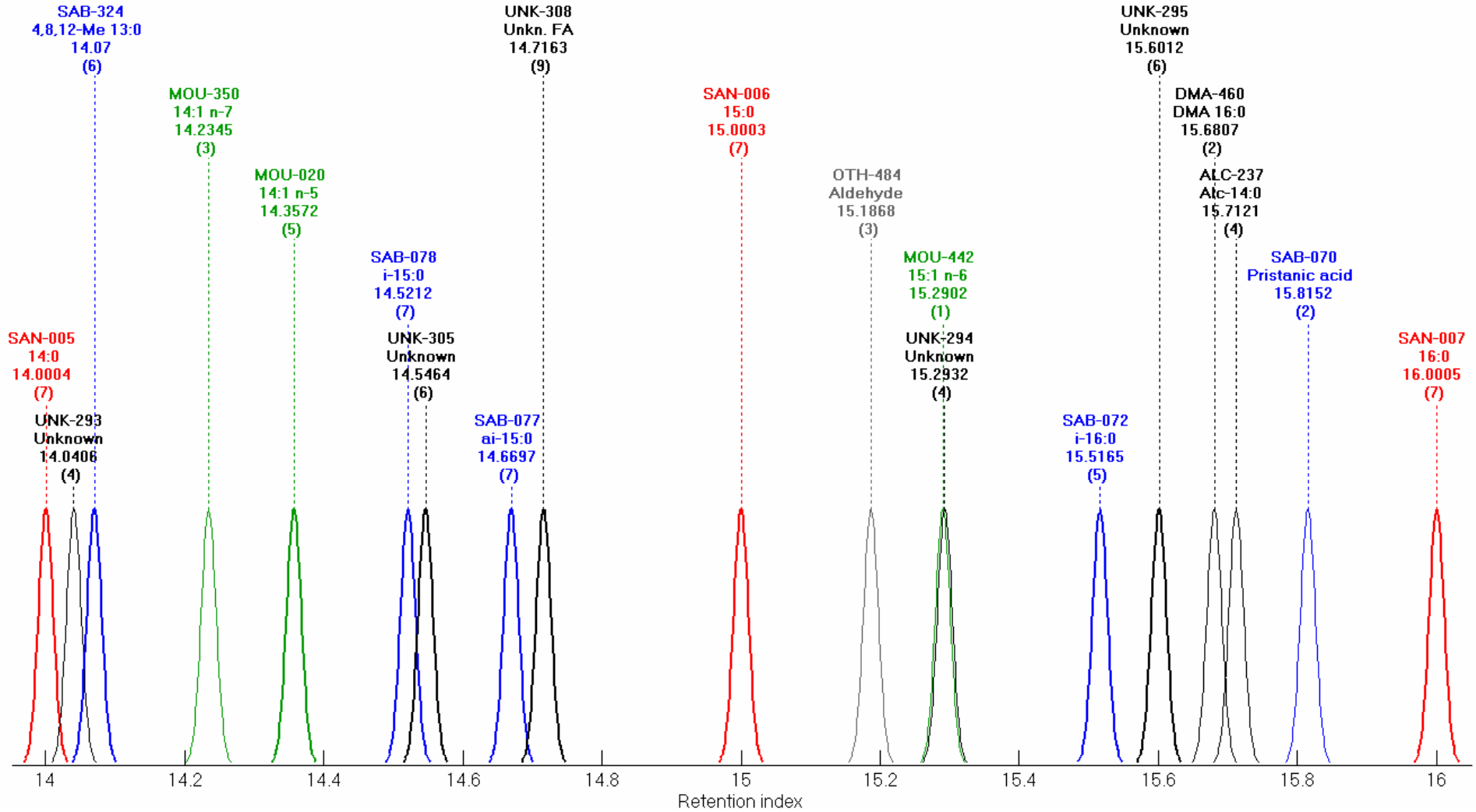
Carrier gas: Helium at 1 ml/min.

Data are acquired at Institute of Marine Research, Bergen, Norway.

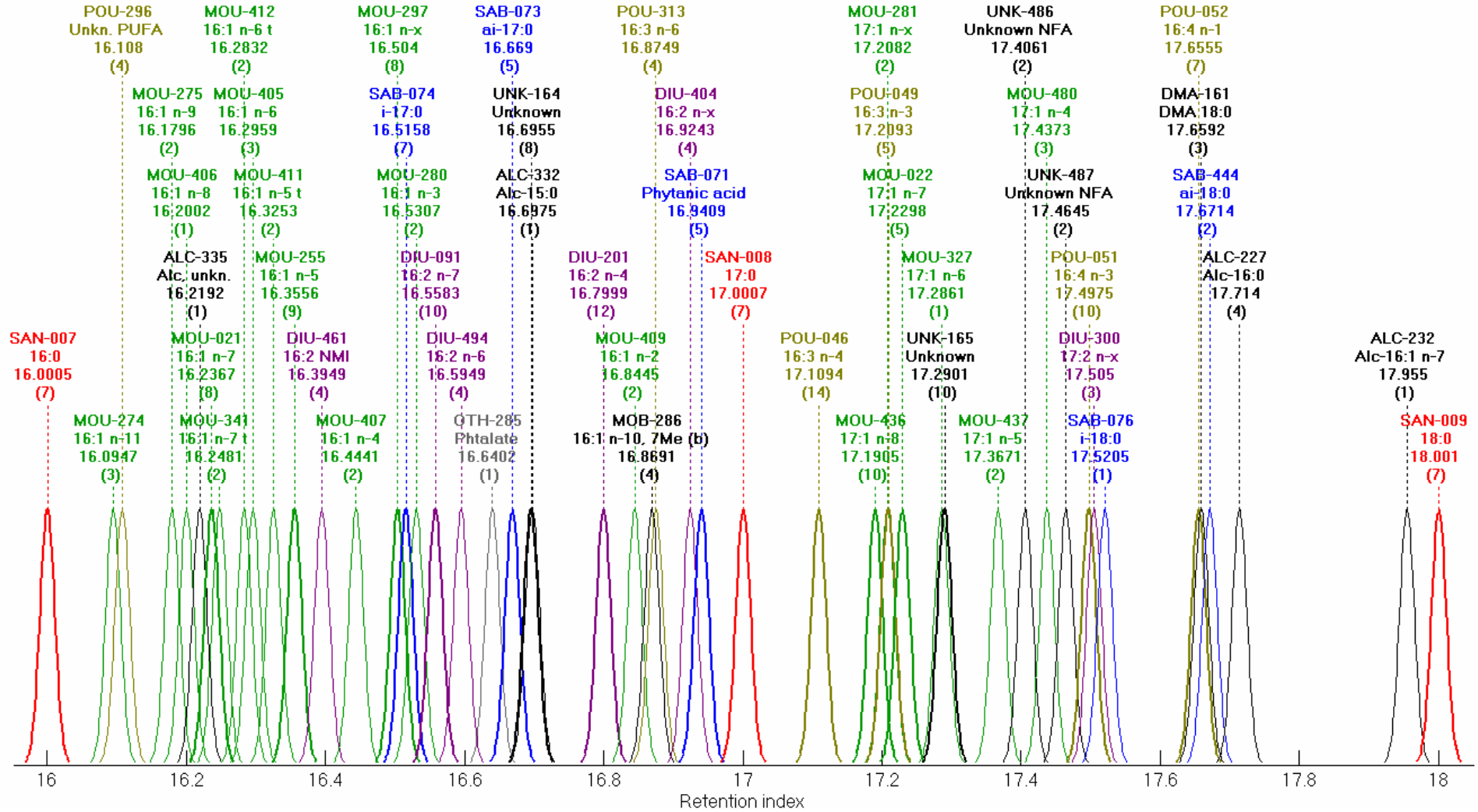
# Equivalent chain lengths (ECL) 12-14



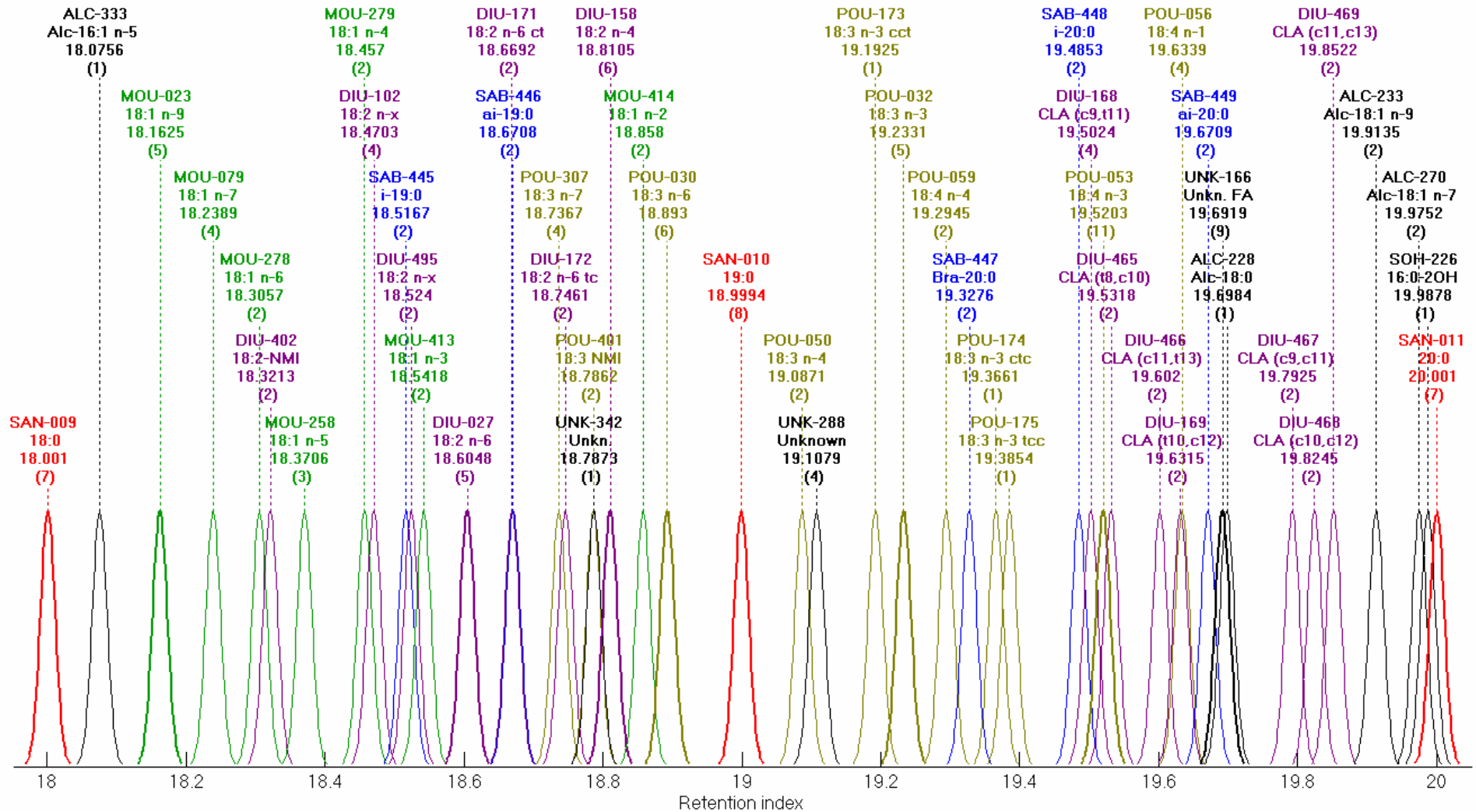
# Equivalent chain lengths (ECL) 14-16



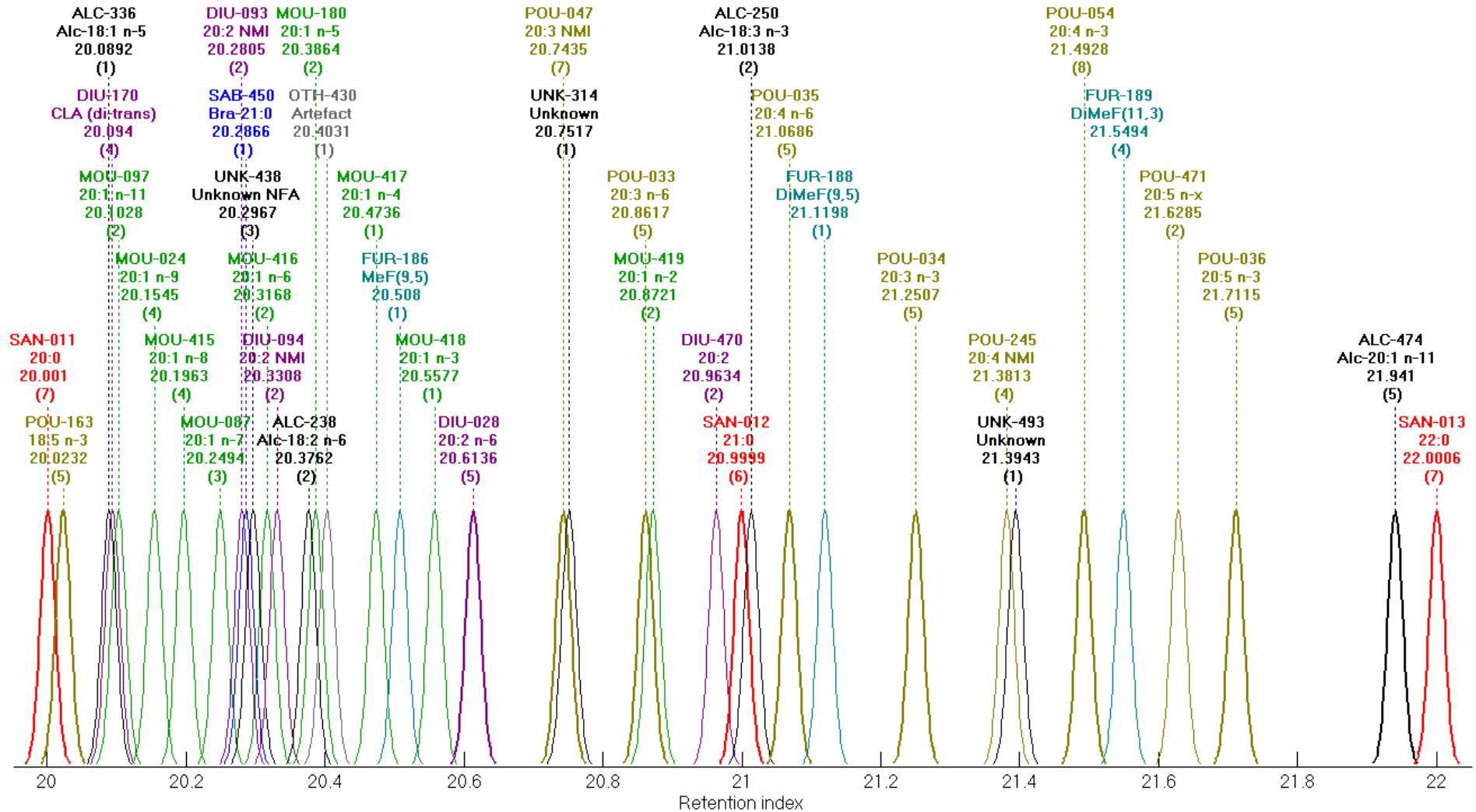
# Equivalent chain lengths (ECL) 16-18



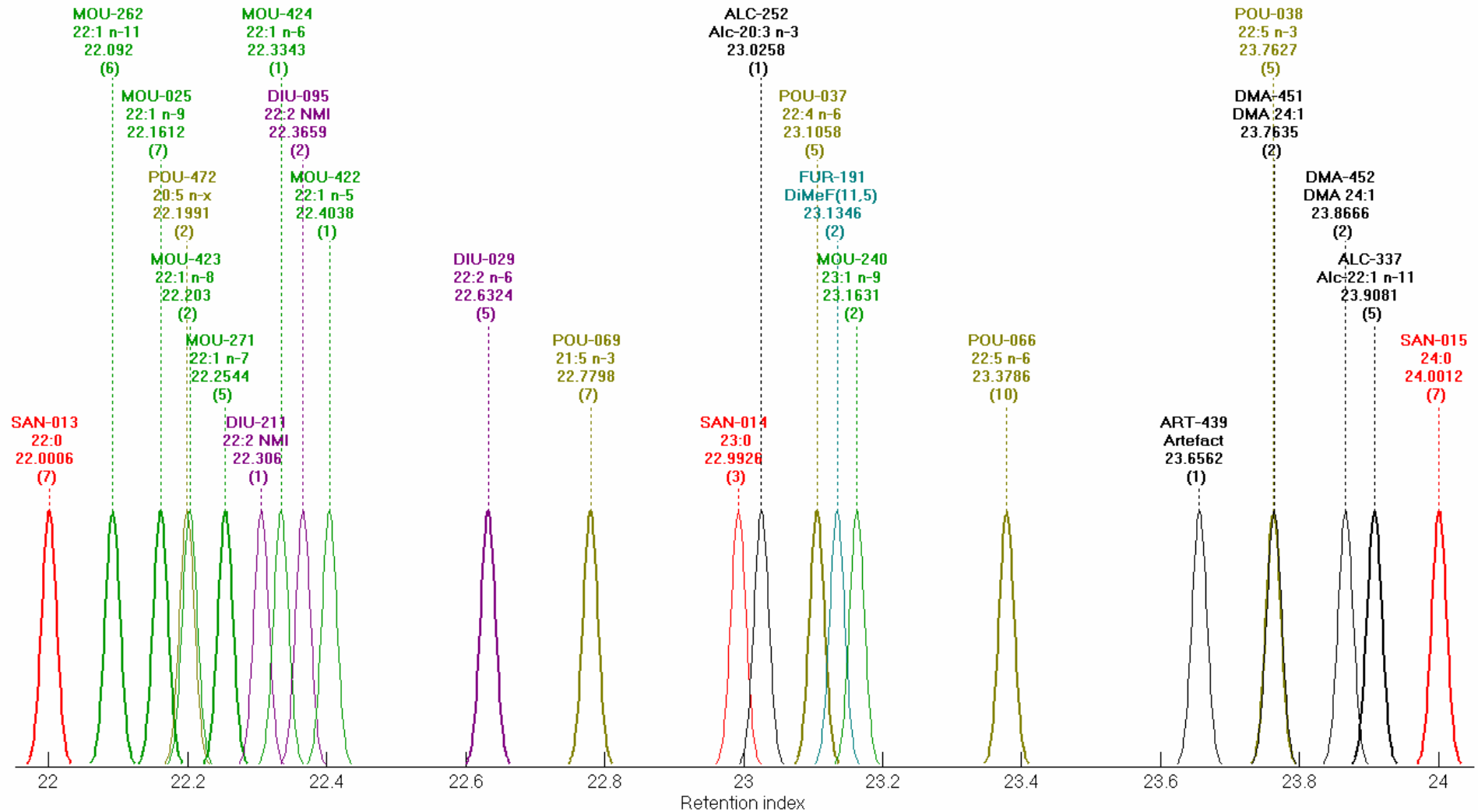
# Equivalent chain lengths (ECL) 18-20



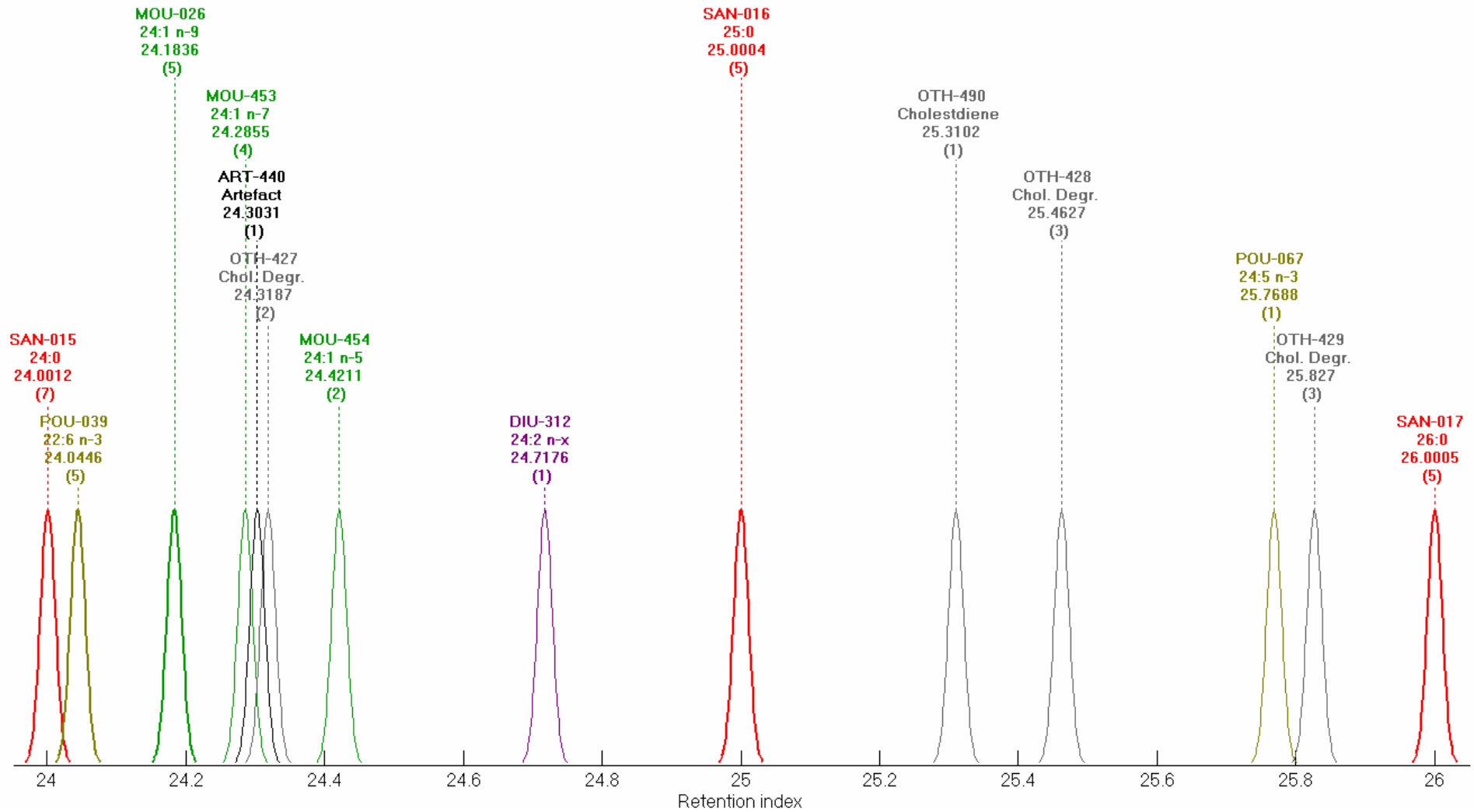
# Equivalent chain lengths (ECL) 20-22



# Equivalent chain lengths (ECL) 22-24



# Equivalent chain lengths (ECL) 24-26





# Equivalent chain lengths (ECL) 26-28

