

## Retention index map SLB-IL100

Equivalent chain lengths (ECL) of FAME on the SLB-IL100 column.

Samples are omega-3 products and reference mixtures.

Peaks are shown with width at half height of 0.025 ECL units.

### Experimental conditions:

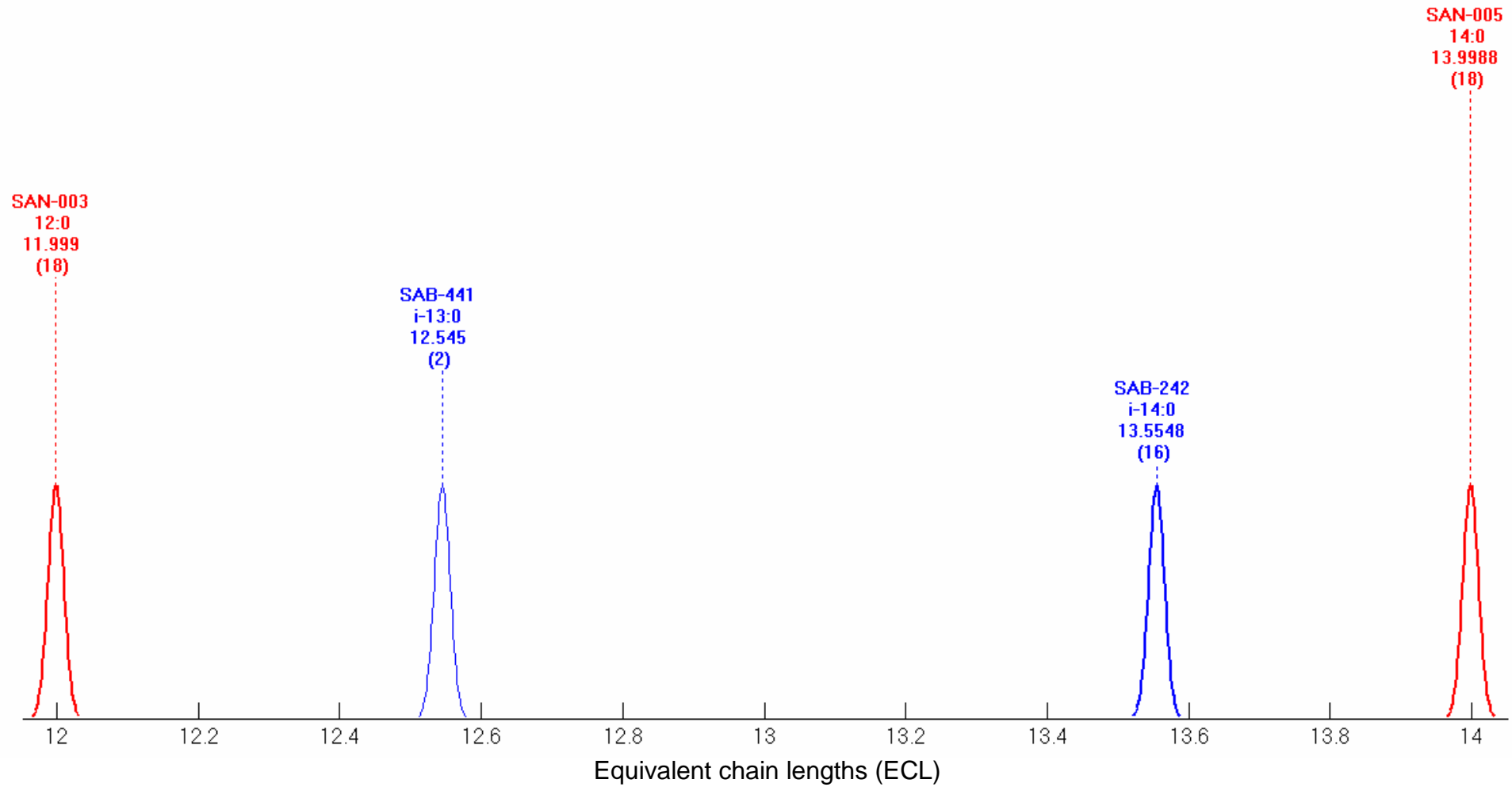
Column: SLB-IL100,  $L = 30$  m,  $i.d. = 0.25$  mm,  $d_f = 0.2$   $\mu$ m (Supelco).

Temperature program: Injection at 60°C, isothermal for 4 min, 30°C/min to 145°C, 2°C/min to 215°C.

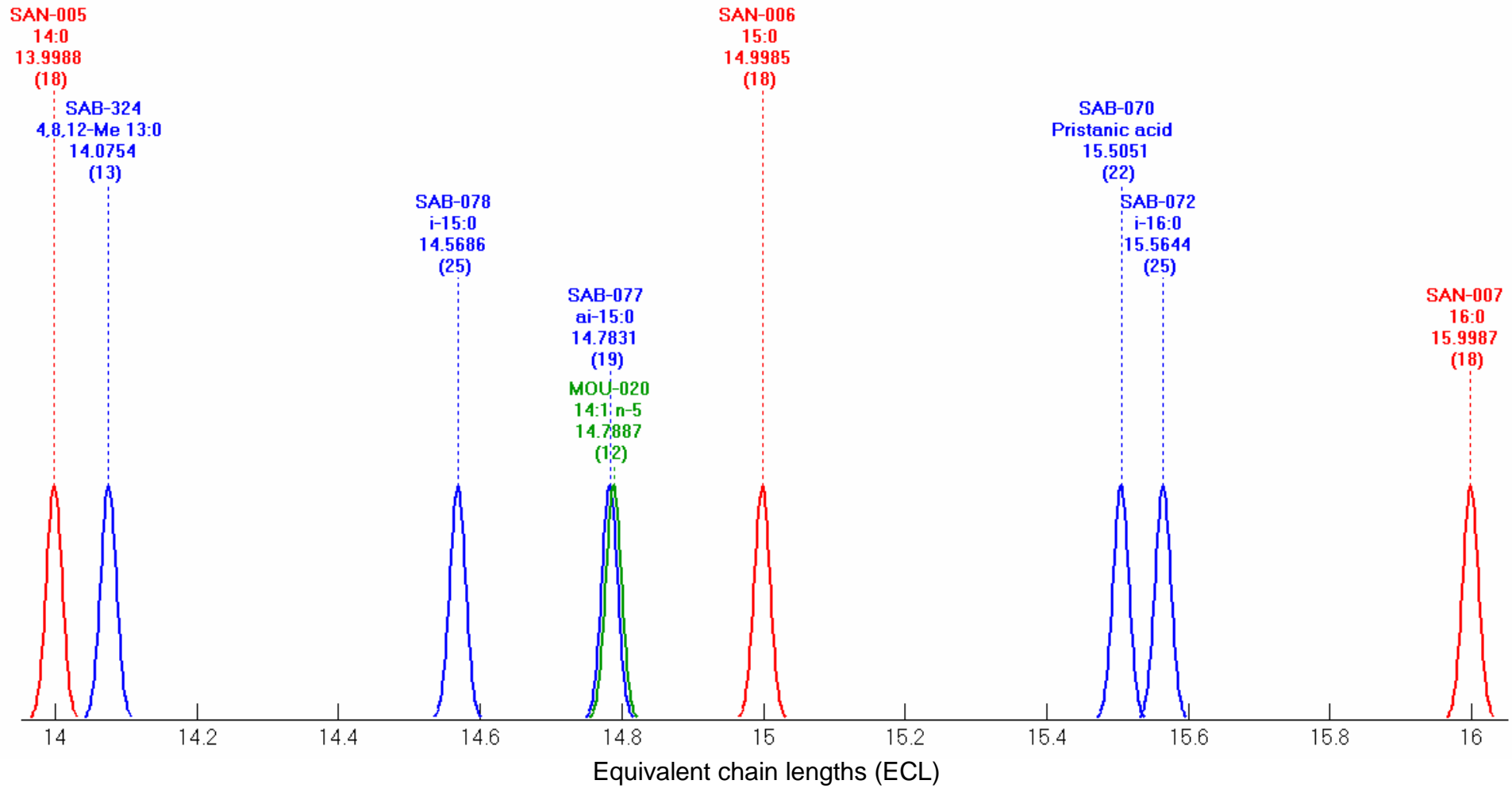
Carrier gas: Helium at 34 cm/s.

Data are acquired at Institute of Marine Research, Bergen, Norway.

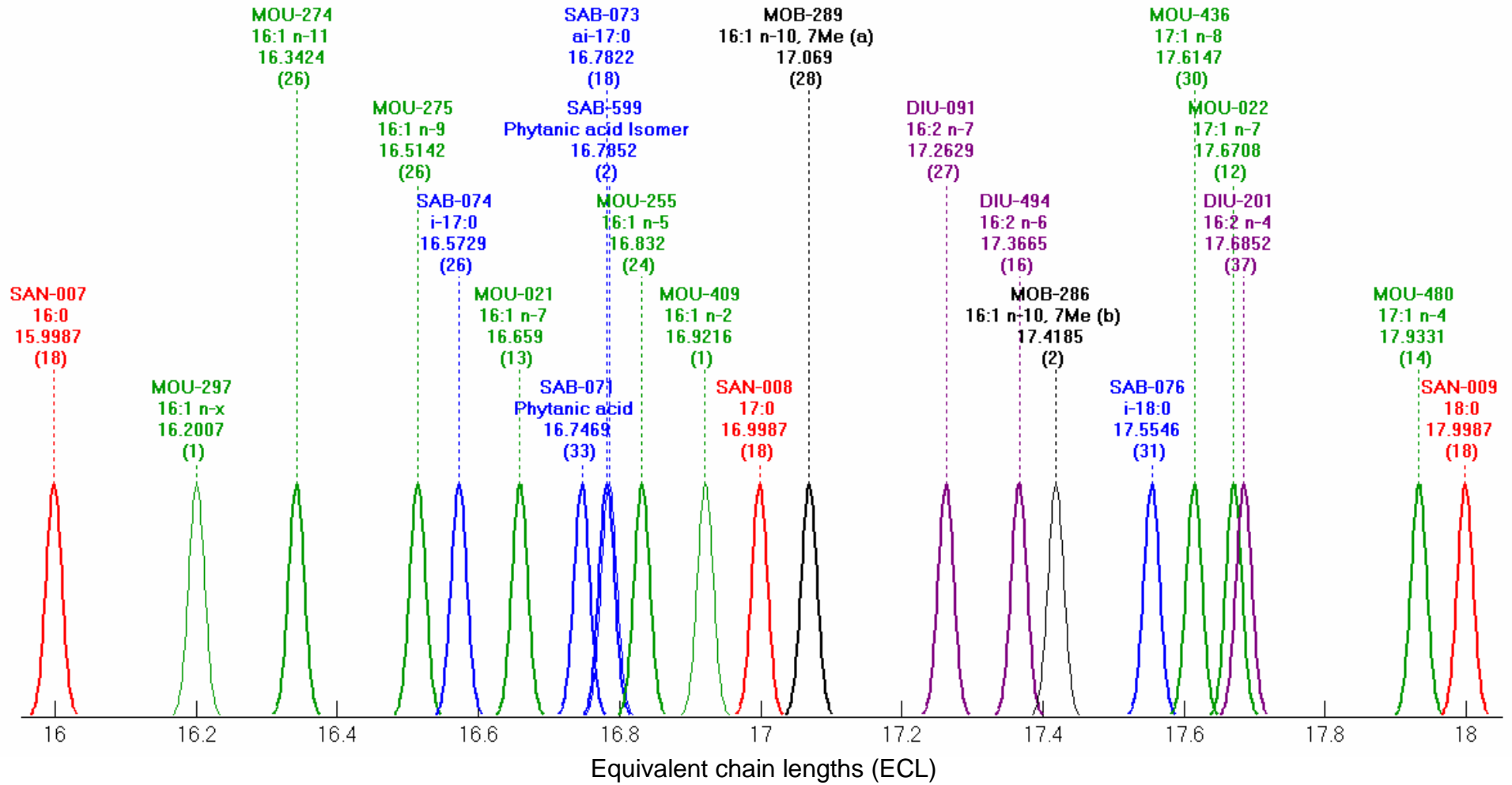
# Equivalent chain lengths (ECL) 12-14



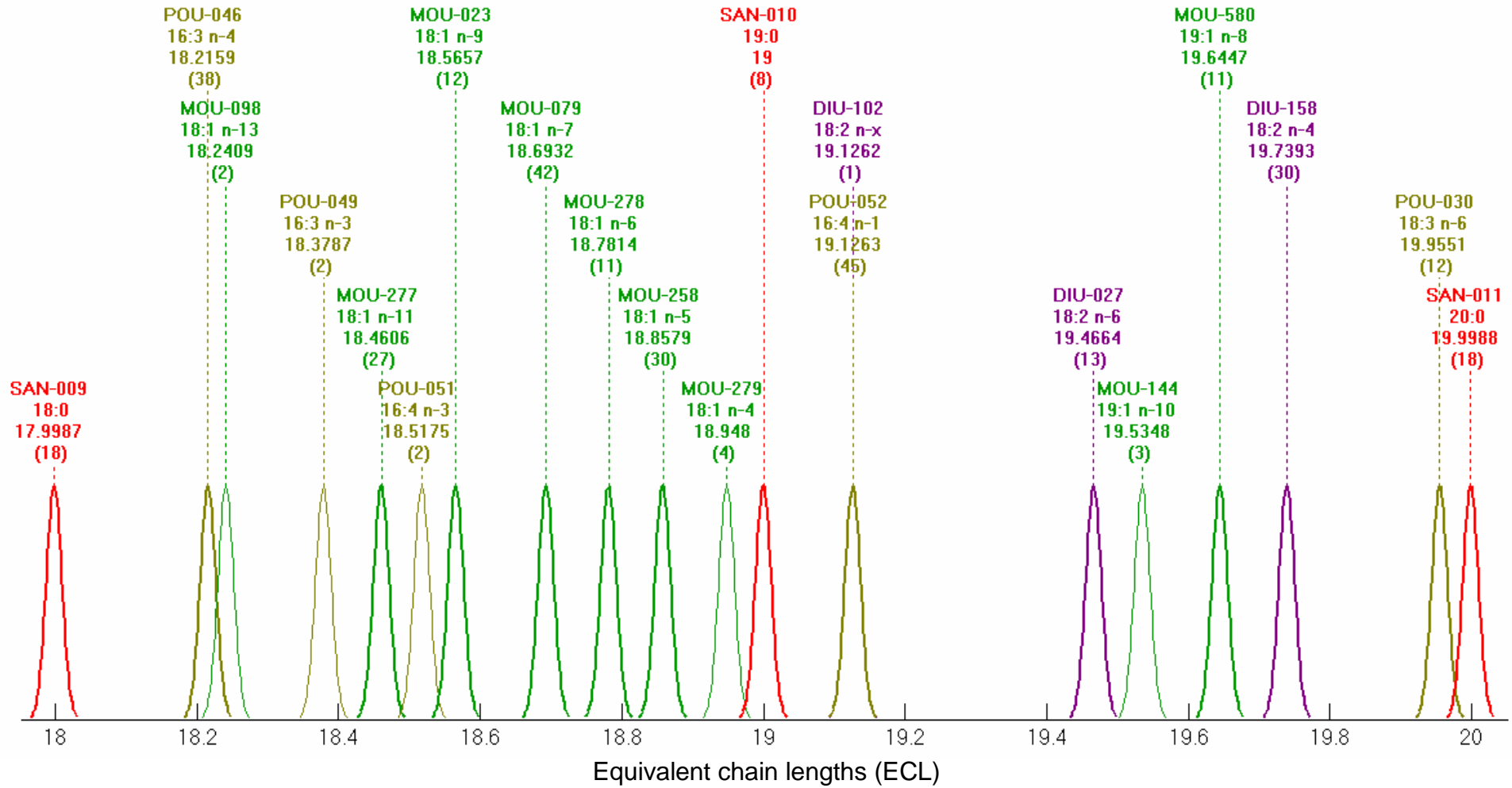
# Equivalent chain lengths (ECL) 14-16



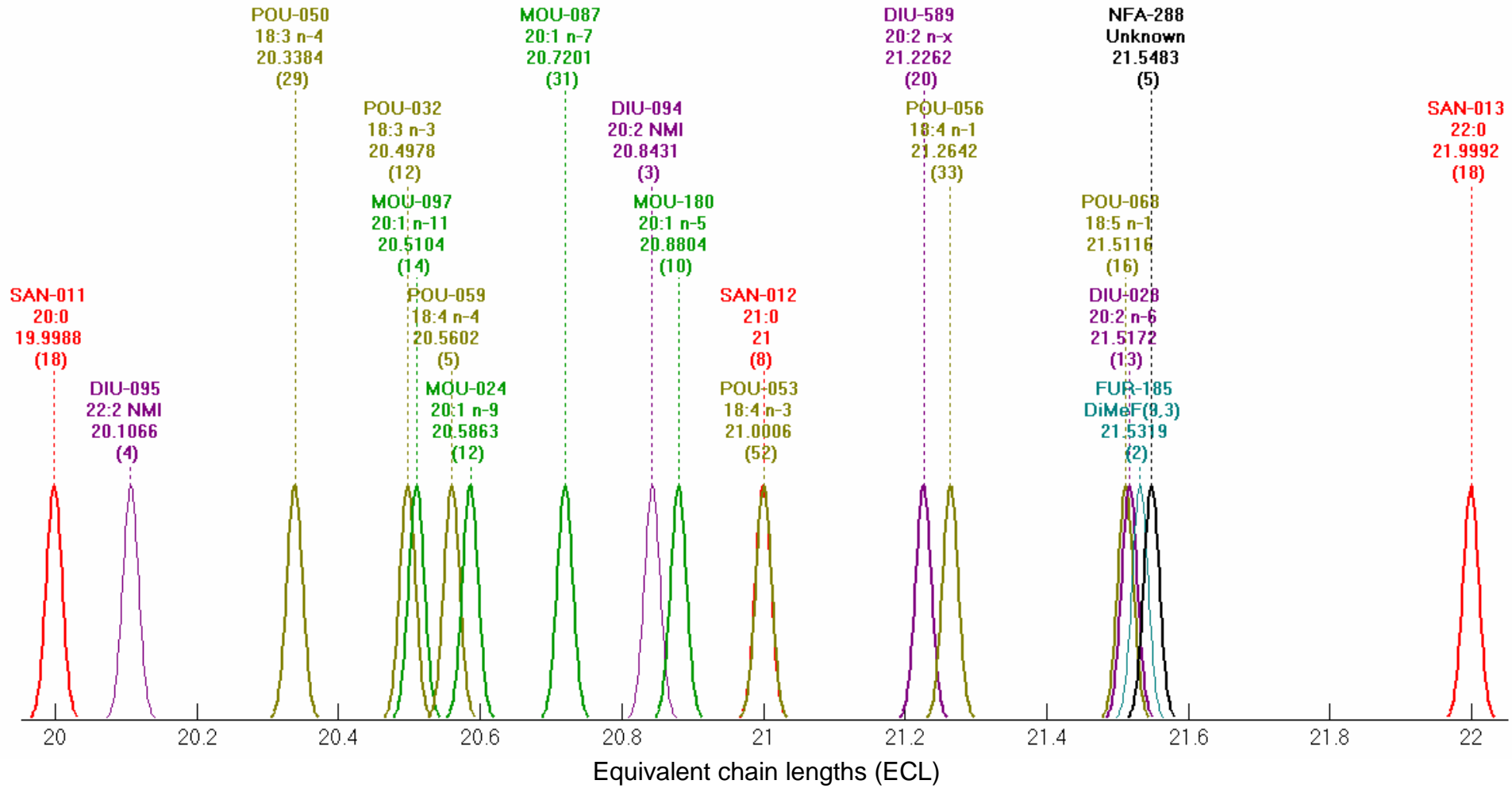
# Equivalent chain lengths (ECL) 16-18



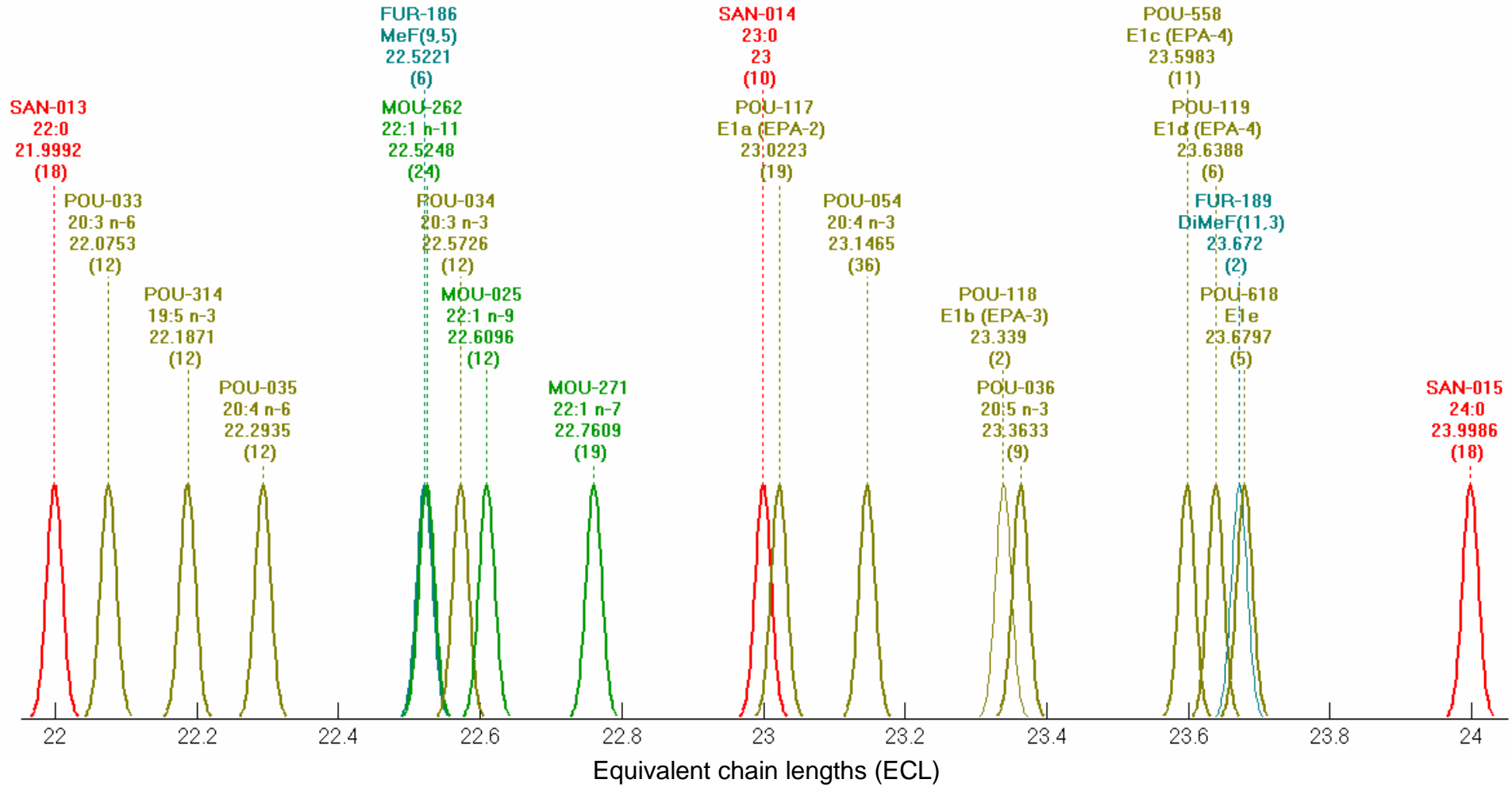
# Equivalent chain lengths (ECL) 18-20



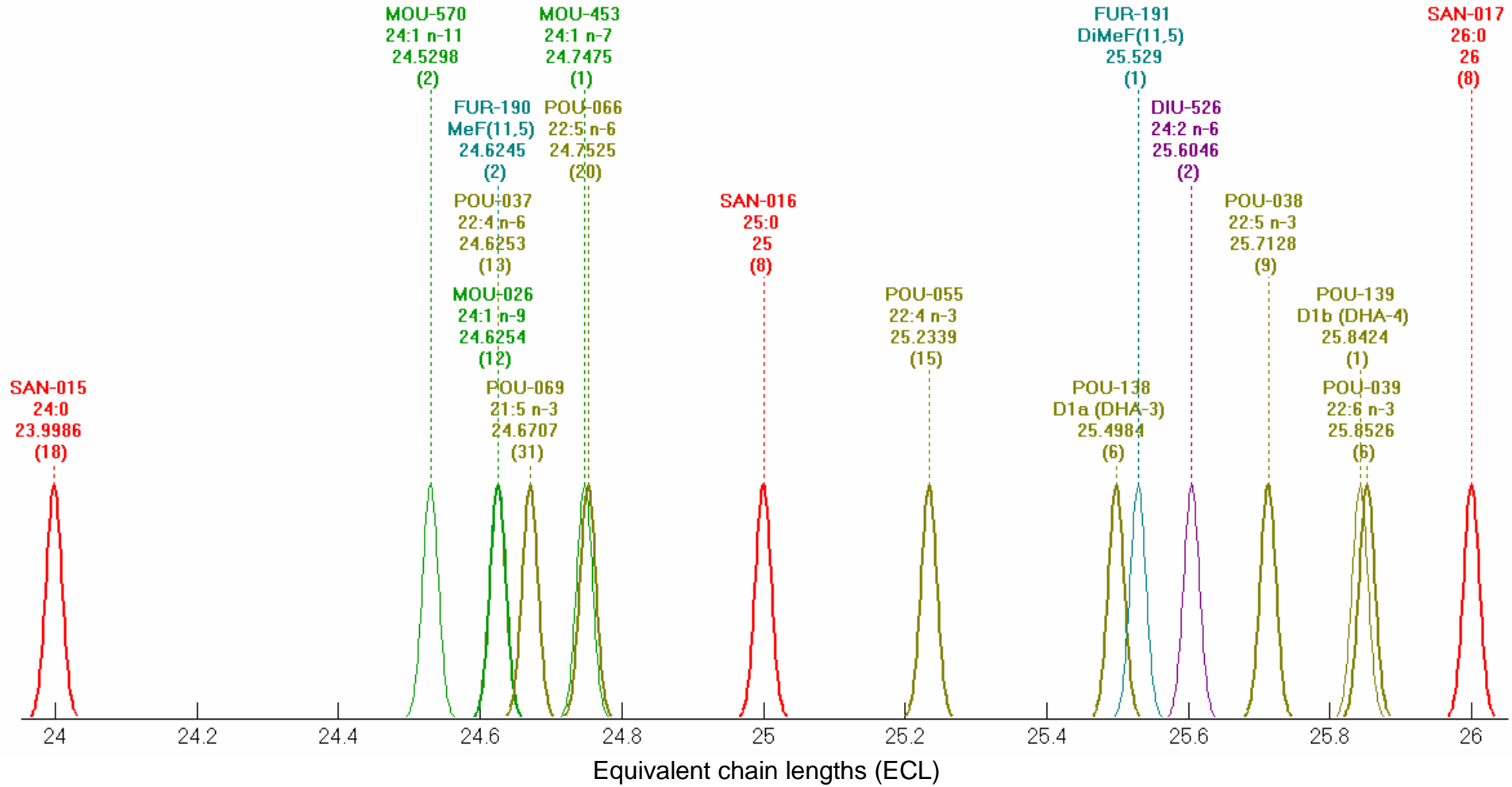
# Equivalent chain lengths (ECL) 20-22



# Equivalent chain lengths (ECL) 22-24

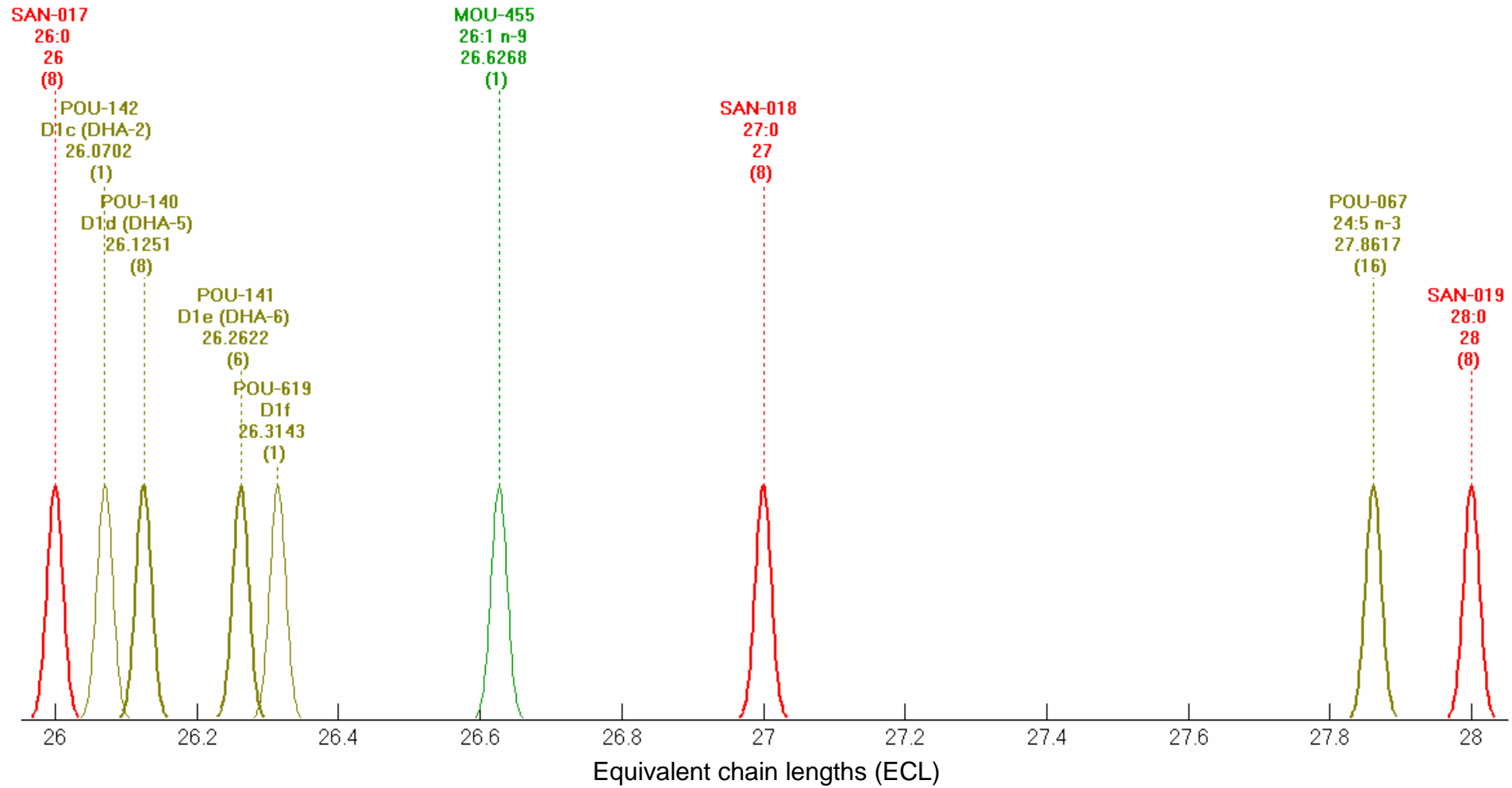


# Equivalent chain lengths (ECL) 24-26





# Equivalent chain lengths (ECL) 26-28



# Equivalent chain lengths (ECL) 28-30

